

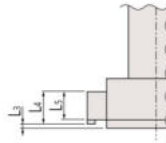
# Holtest

For easy and accurate measurement of inside diameters

## Holtest SERIES 368 — Three-point/Two-point Internal Micrometers

- Titanium-coated measuring pins on the three-point type (over 6 mm range models) provide excellent durability and impact resistance.
- Three-point bore micrometer with measuring range 6 mm or longer allows stable measurement through automatic centering.
- Measurement can be made close to the bottom of a blind hole.
- Deep holes can be measured by attaching an Extension Rod (optional) which is available on models over 6 mm (0.275 in) measuring range.
- Constant-force device allows repeatable measurement, regardless of operator's skill.
- For details of Setting Rings, refer to page C-47.

Range (mm)	L <sub>3</sub> (mm)	L <sub>4</sub> (mm)	L <sub>5</sub> (mm)
2 - 6	—	—	2
6 - 12	2 or below	—	2.5
12 - 20	0.3 or below	5.6	3.5
20 - 30		8.3	5.2
30 - 50		13.0	10.0
50 - 100		17.0	14.0
100 - 300	12.4 or below	21.0	13.8



**368-001**  
(Two-point contact model)



**368-168**



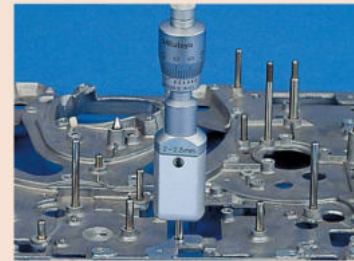
**368-170**



**368-174**



An inspection certificate is supplied as standard. Refer to page U-9 for details.



Typical application using an extension rod

For details of Special-order Products, refer to page C-49.



C-7

Mitutoyo reserves the right to change any or all aspects of any product specification, including prices, designs and service content, without notice.

## SPECIFICATIONS

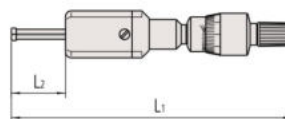
Metric					Inch				
Order No.	Range*2 (mm)	Graduation (mm)	Maximum permissible error $J_{MPE}$ ( $\mu\text{m}$ )*1	Extension Rod (optional)	Order No.	Range*2 (in)	Graduation (in)	Maximum permissible error $J_{MPE}$ (in)*1	Extension Rod (optional)
(Two-point)					(Two-point)				
368-001	2 - 2.5	0.001	$\pm 2$ (maximum difference 2)	—	368-021	0.08 - 0.1	0.0001	$\pm 0.0001$ (maximum difference 0.0001)	—
368-002	2.5 - 3				368-022	0.1 - 0.12			
368-003	3 - 4				368-023	0.12 - 0.16			
368-004	4 - 5				368-024	0.16 - 0.2			
368-005	5 - 6				368-025	0.2 - 0.24			
(Three-point)					(Three-point)				
368-161	6 - 8	0.005	$\pm 3$ (maximum difference 3)	952322 (100 mm)	368-261	0.275 - 0.35	0.0002	$\pm 0.00015$ (maximum difference 0.00015)	952322 (100 mm)
368-162	8 - 10			368-262	0.35 - 0.425	952621 (150 mm)			
368-163	10 - 12			368-263	0.425 - 0.5	952621 (150 mm)			
368-164	12 - 16			368-264	0.5 - 0.65	952622 (150 mm)			
368-165	16 - 20			368-265	0.65 - 0.8	952622 (150 mm)			
368-166	20 - 25			368-266	0.8 - 1	952623 (150 mm)			
368-167	25 - 30			368-267	1 - 1.2	952623 (150 mm)			
368-168	30 - 40			368-268	1.2 - 1.6	952623 (150 mm)			
368-169	40 - 50			368-269	1.6 - 2	952623 (150 mm)			
368-170	50 - 63			368-270	2 - 2.5	952623 (150 mm)			
368-171	62 - 75			368-271	2.5 - 3	952623 (150 mm)			
368-172	75 - 88			368-272	3 - 3.5	952623 (150 mm)			
368-173	87 - 100			368-273	3.5 - 4	952623 (150 mm)			
368-174	100 - 125			368-274	4 - 5	952623 (150 mm)			
368-175	125 - 150			368-275	5 - 6	952623 (150 mm)			
368-176	150 - 175	368-276	6 - 7	952623 (150 mm)					
368-177	175 - 200	368-277	7 - 8	952623 (150 mm)					
368-178	200 - 225	368-278	8 - 9	952623 (150 mm)					
368-179	225 - 250	368-279	9 - 10	952623 (150 mm)					
368-180	250 - 275	368-280	10 - 11	952623 (150 mm)					
368-181	275 - 300	368-281	11 - 12	952623 (150 mm)					

\*1 Additionally, the difference in permissible error allowable is limited to a value within this range, as given in parentheses, and is measured with the entire measuring surface in contact with the object measured.

\*2 The measurement range cannot be enlarged by measuring heads that are not standard-supplied (the accuracy is not guaranteed).

Note: Setting rings are optional.

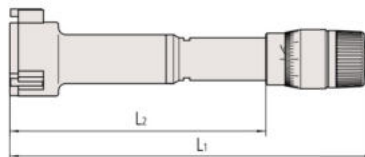
## DIMENSIONS



Unit: mm

Range	L <sub>2</sub>	L <sub>1</sub>
2 - 2.5, 2.5 - 3 mm	12	103.5 - 104
3 - 4, 4 - 5, 5 - 6 mm	22	113 - 114

Note: External appearance differs depending on the measuring range.



Range	L <sub>2</sub>	L <sub>1</sub>
6 - 8, 8 - 10, 10 - 12 mm	59	102 - 104
12 - 16, 16 - 20 mm	82	126 - 130
20 - 25, 25 - 30 mm	94	137 - 142
30 - 40, 40 - 50 mm	102	145 - 155
50 - 63, 62 - 75, 75 - 88, 87 - 100 mm	105	150 - 163
100 - 125, 125 - 150, 150 - 175, 175 - 200, 200 - 225, 225 - 250, 250 - 275, 275 - 300 mm	161	227 - 252

Note: External appearance differs depending on the measuring range.